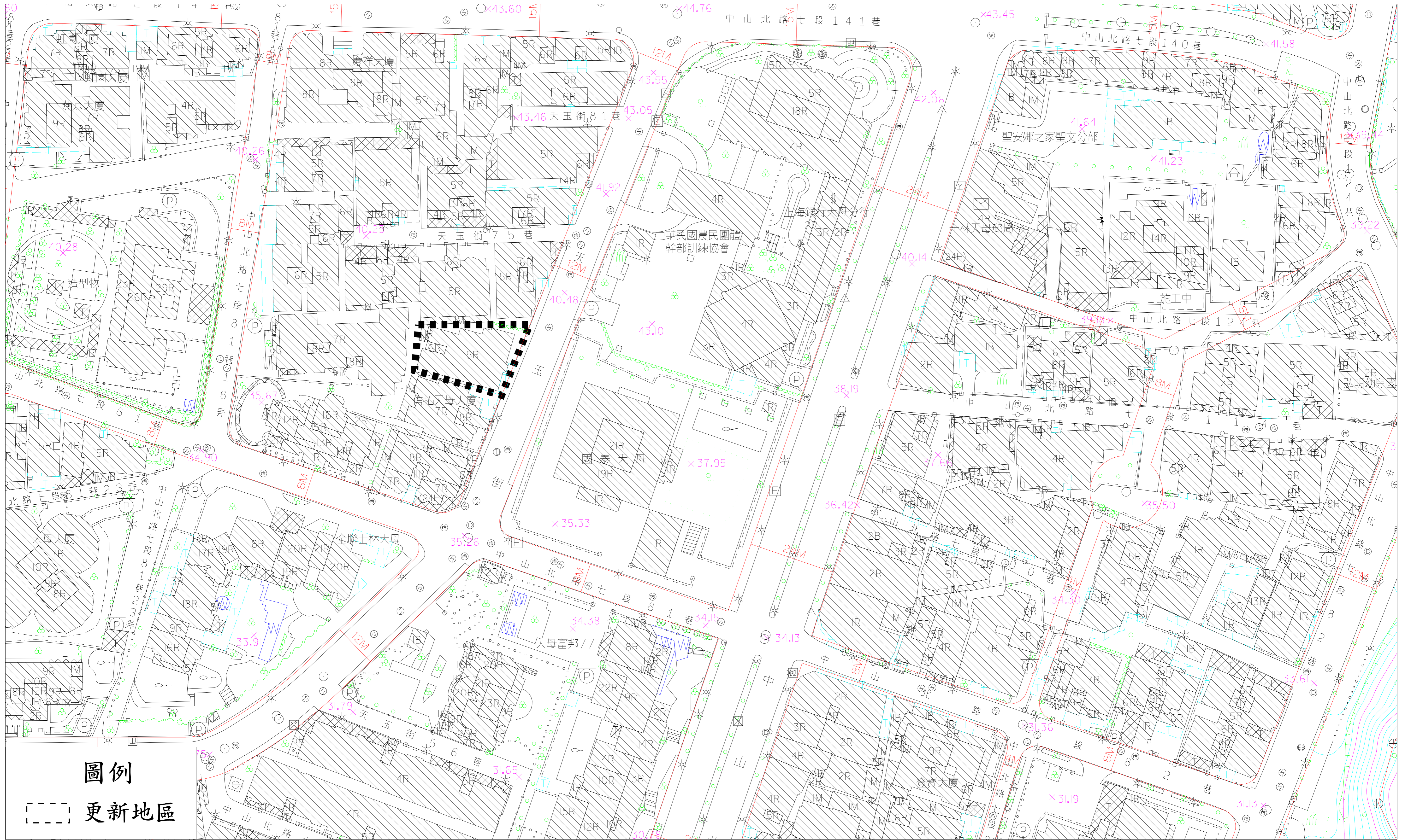
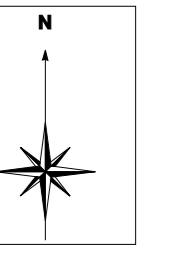


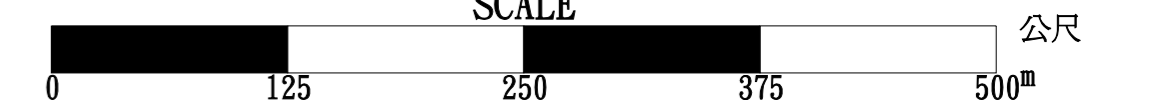
# 士林區-士林-1-臺北市士林區天母段四小段434地號更新地區



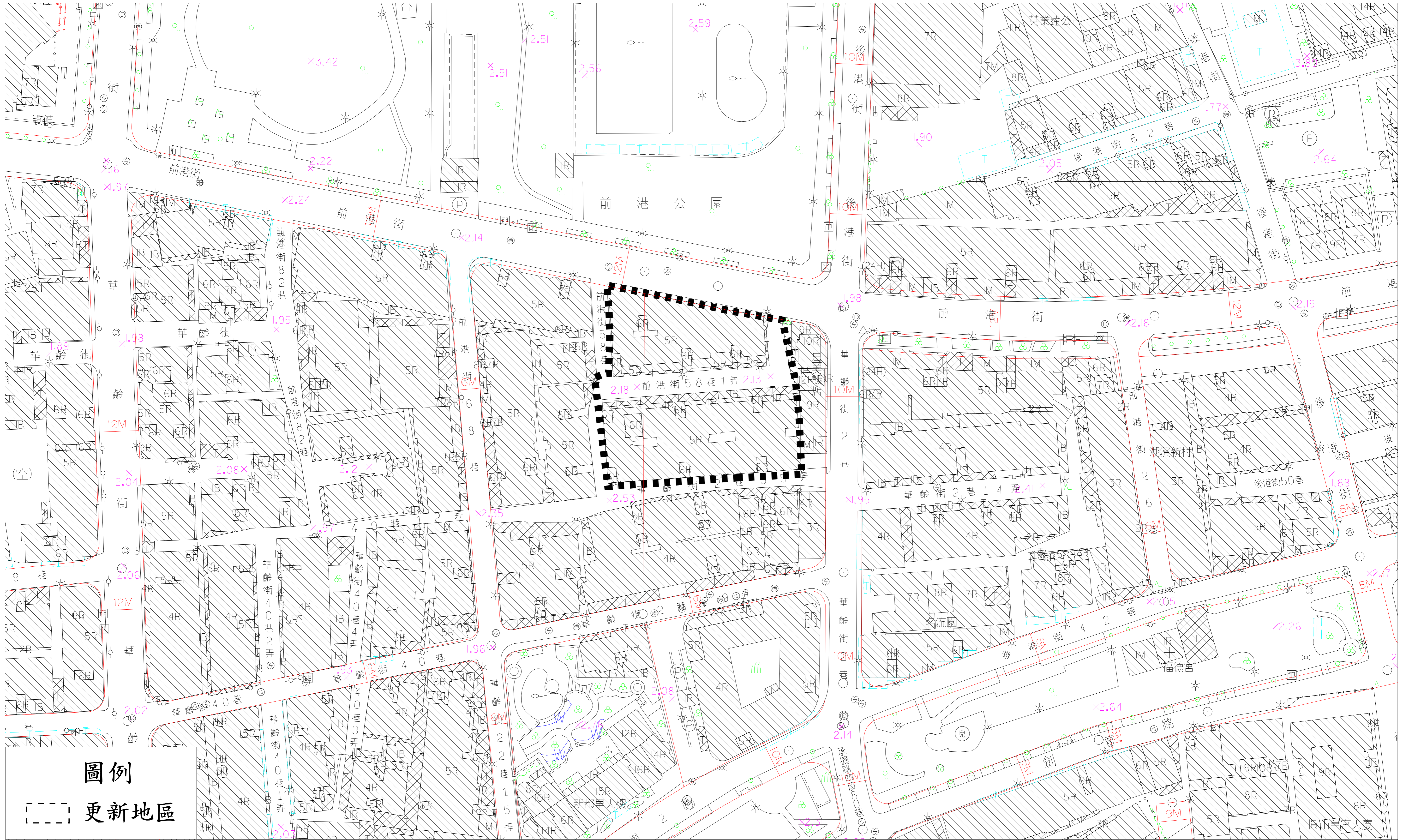
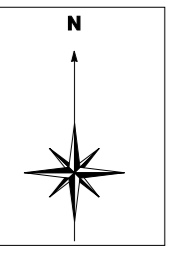
圖例

更新地區

比例尺  
SCALE



# 士林區-士林-2-臺北市士林區百齡段五小段116等5筆地號更新地區

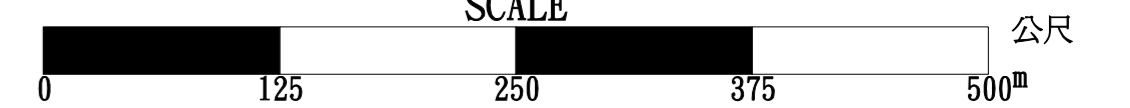


圖例

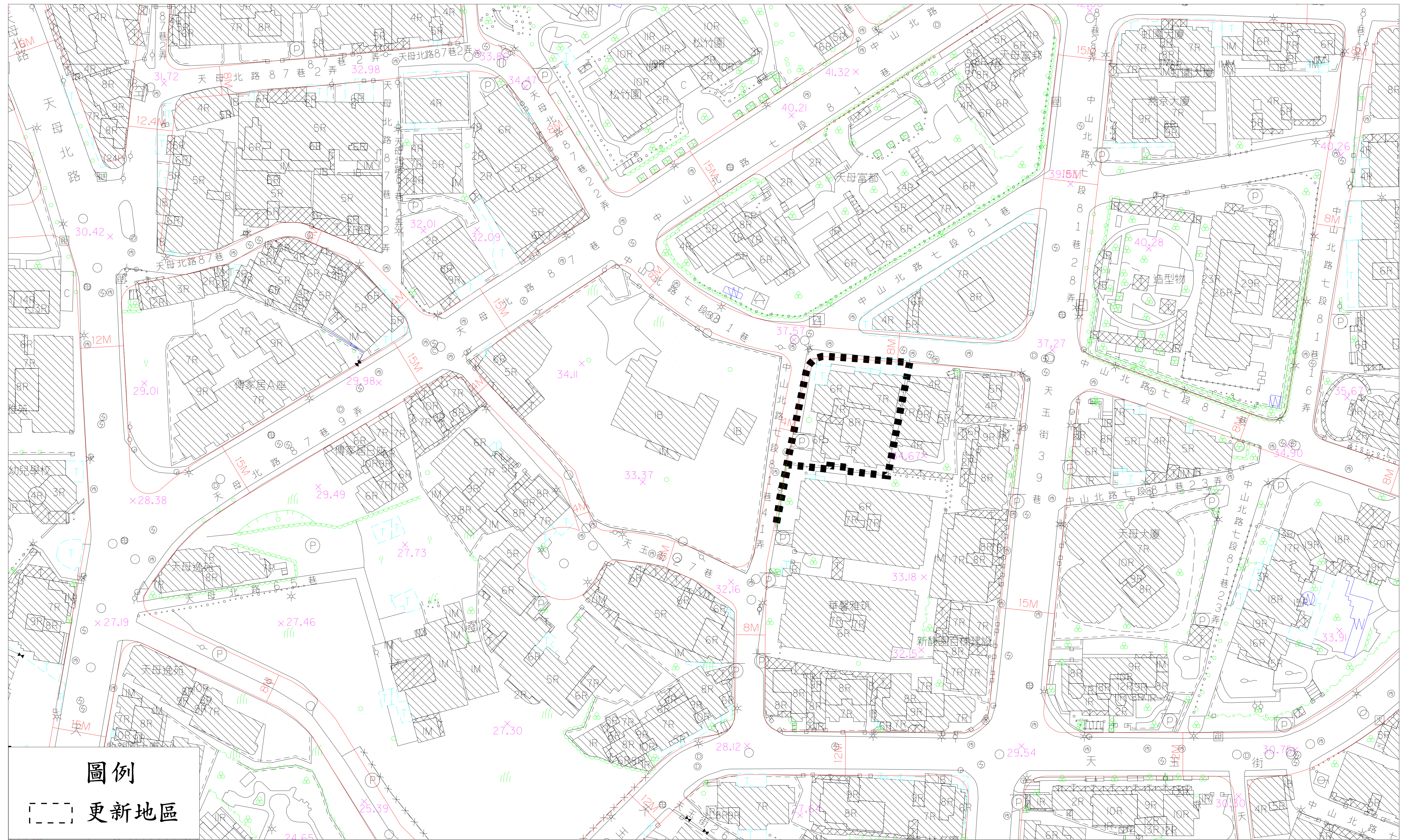
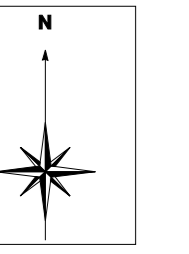
--- 更新地區

比例尺

SCALE



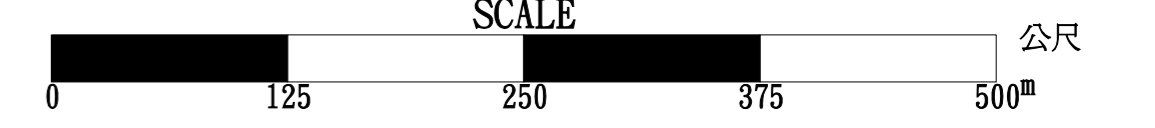
# 士林區-士林-3-臺北市士林區天母段三小段108等3筆地號(瑞成山莊)更新地區



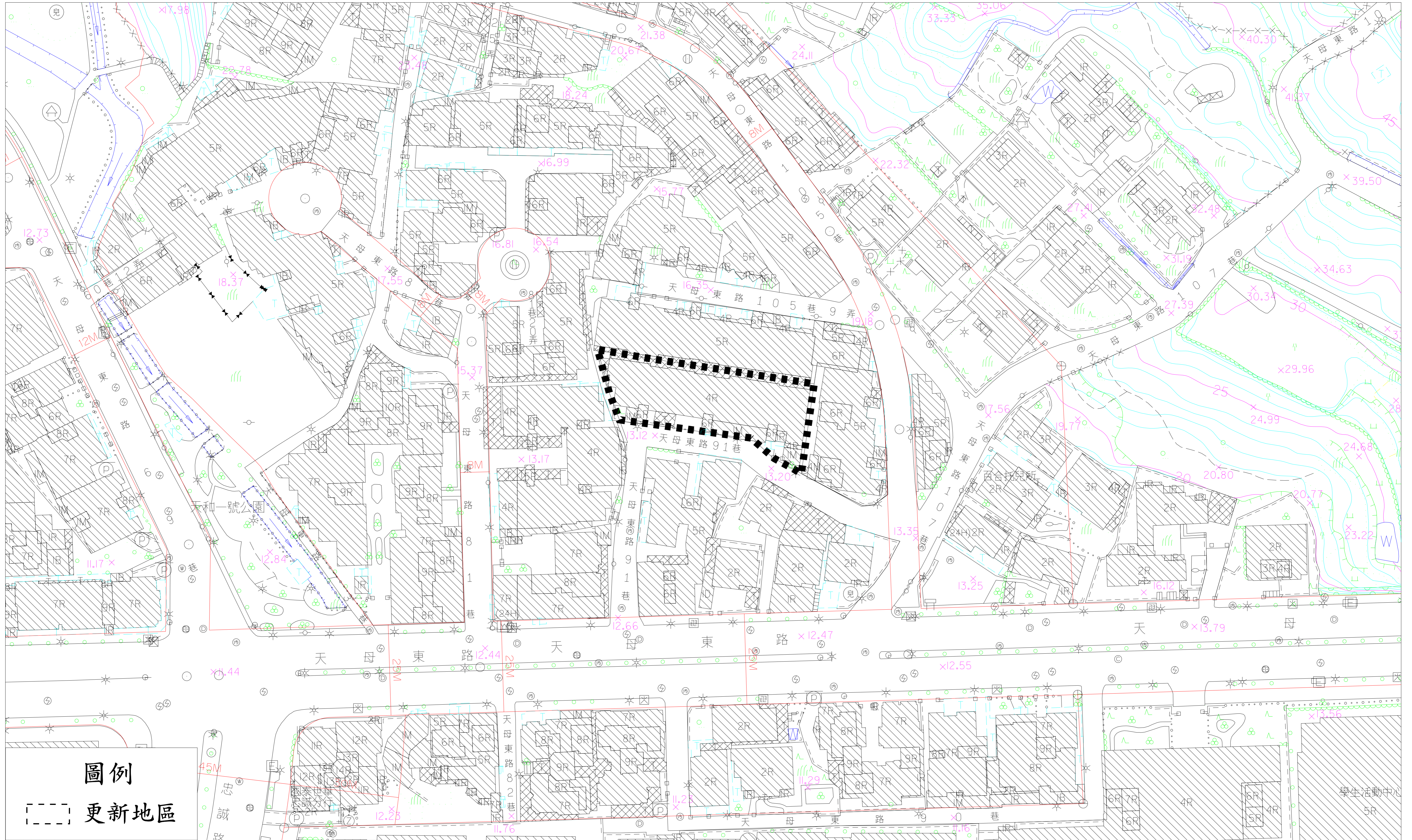
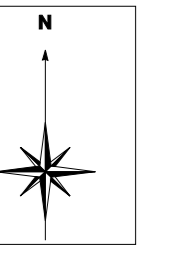
圖例

更新地區

比例尺  
SCALE



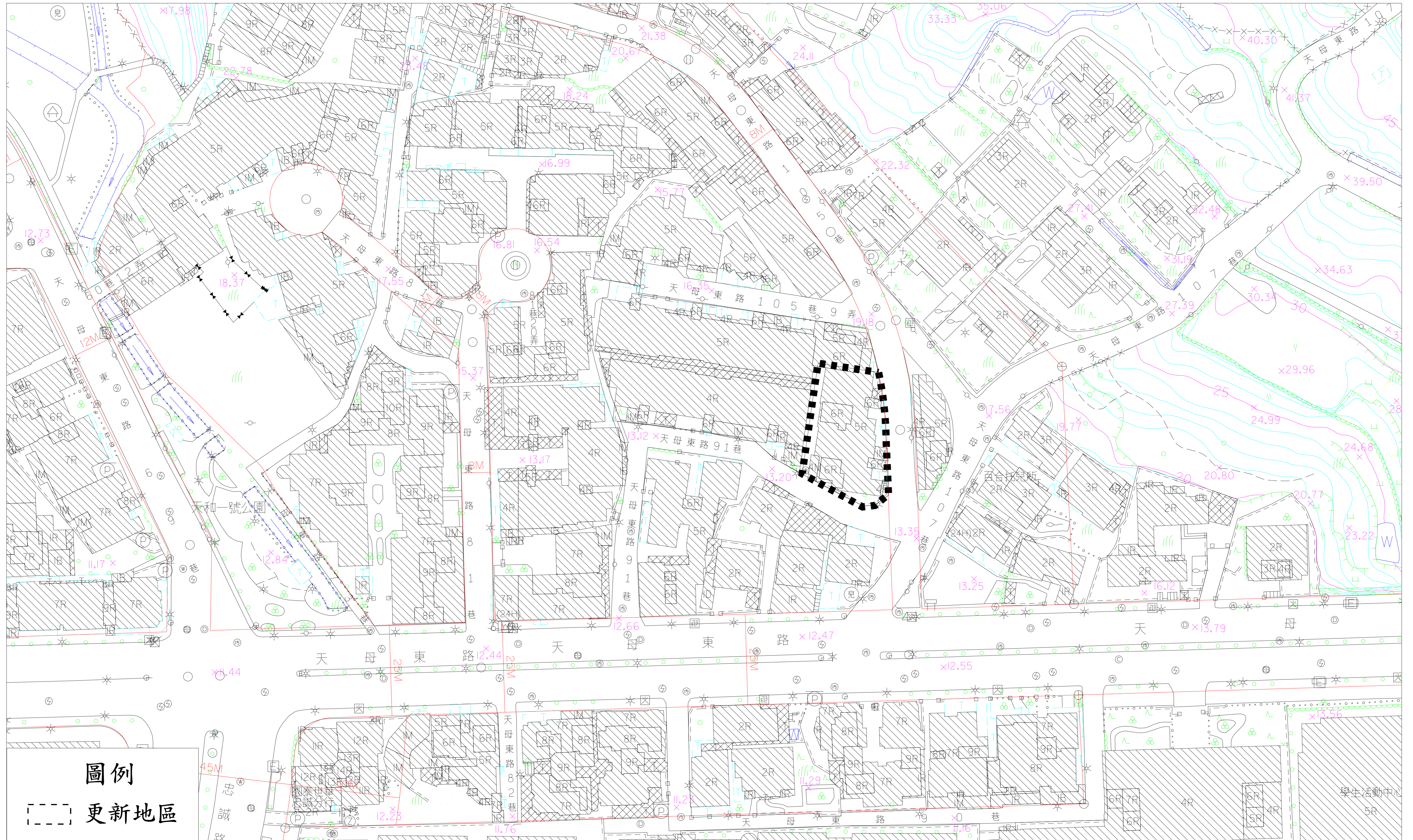
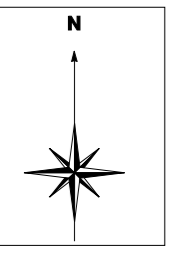
# 士林區-士林-4-臺北市士林區天山段二小段117地號更新地區



註：南側相鄰之天山段二小段120地號，查屬指定有案之私設通路，無產生畸零地情形，惟其土地及合法建築物所有權人，同意於後續開發階段，依相關規定辦理讓售時，應與本更新地區合併開發。

比例尺  
SCALE  
0 125 250 375 500 公尺

# 士林區-士林-5-臺北市士林區天山段二小段118地號更新地區

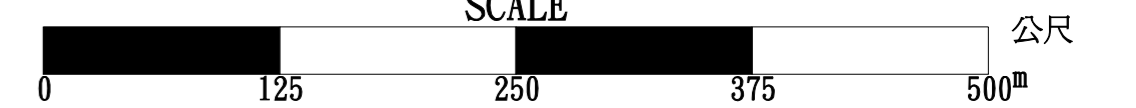


圖例

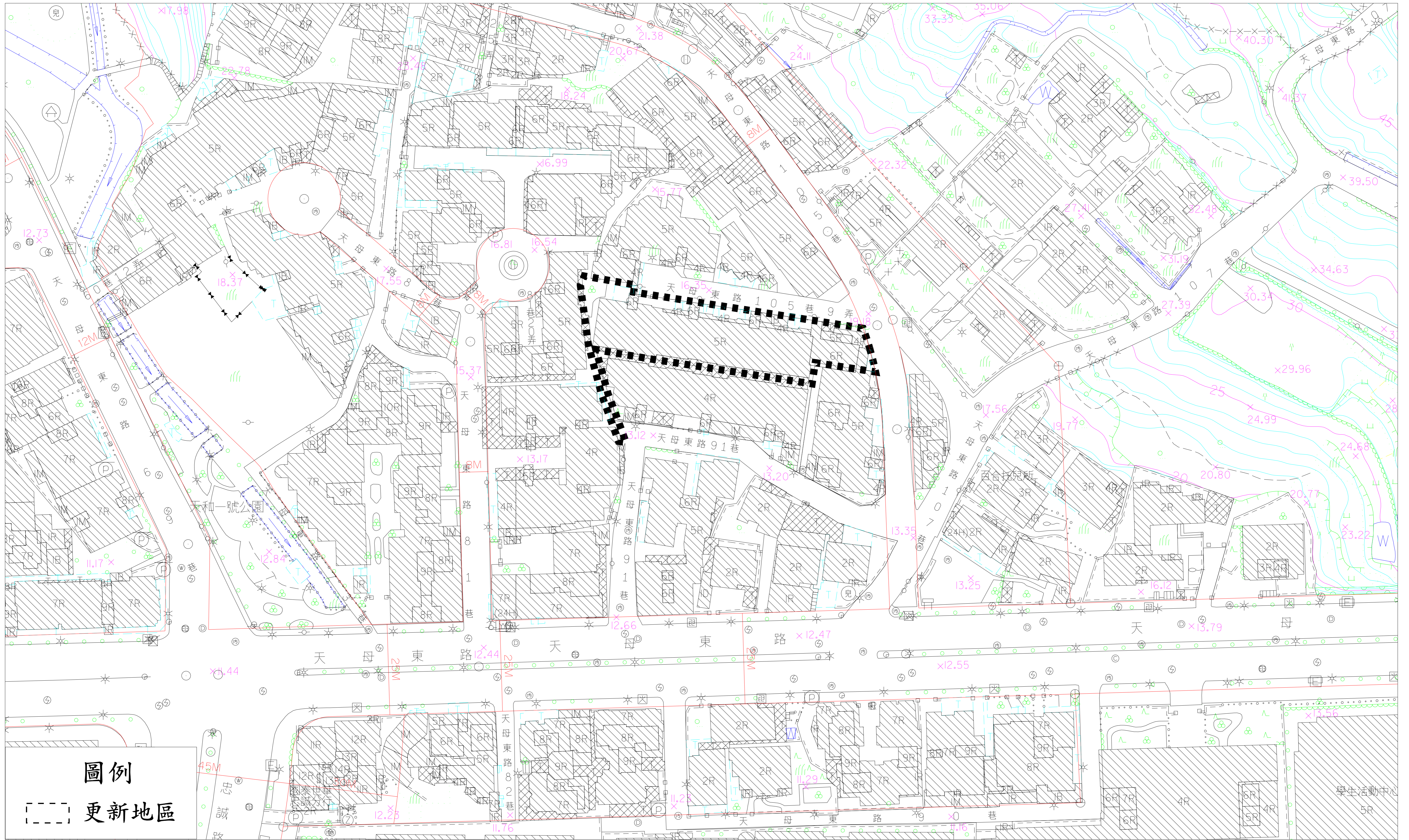
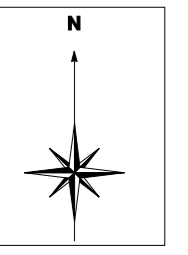
--- 更新地區

比例尺

SCALE



# 士林區-士林-6-臺北市士林區天山段二小段116等2筆地號更新地區

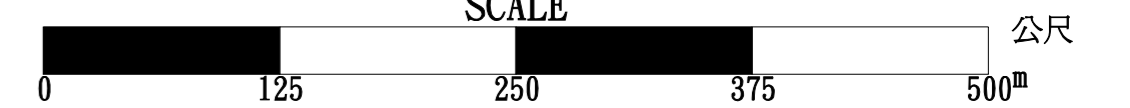


圖例

--- 更新地區

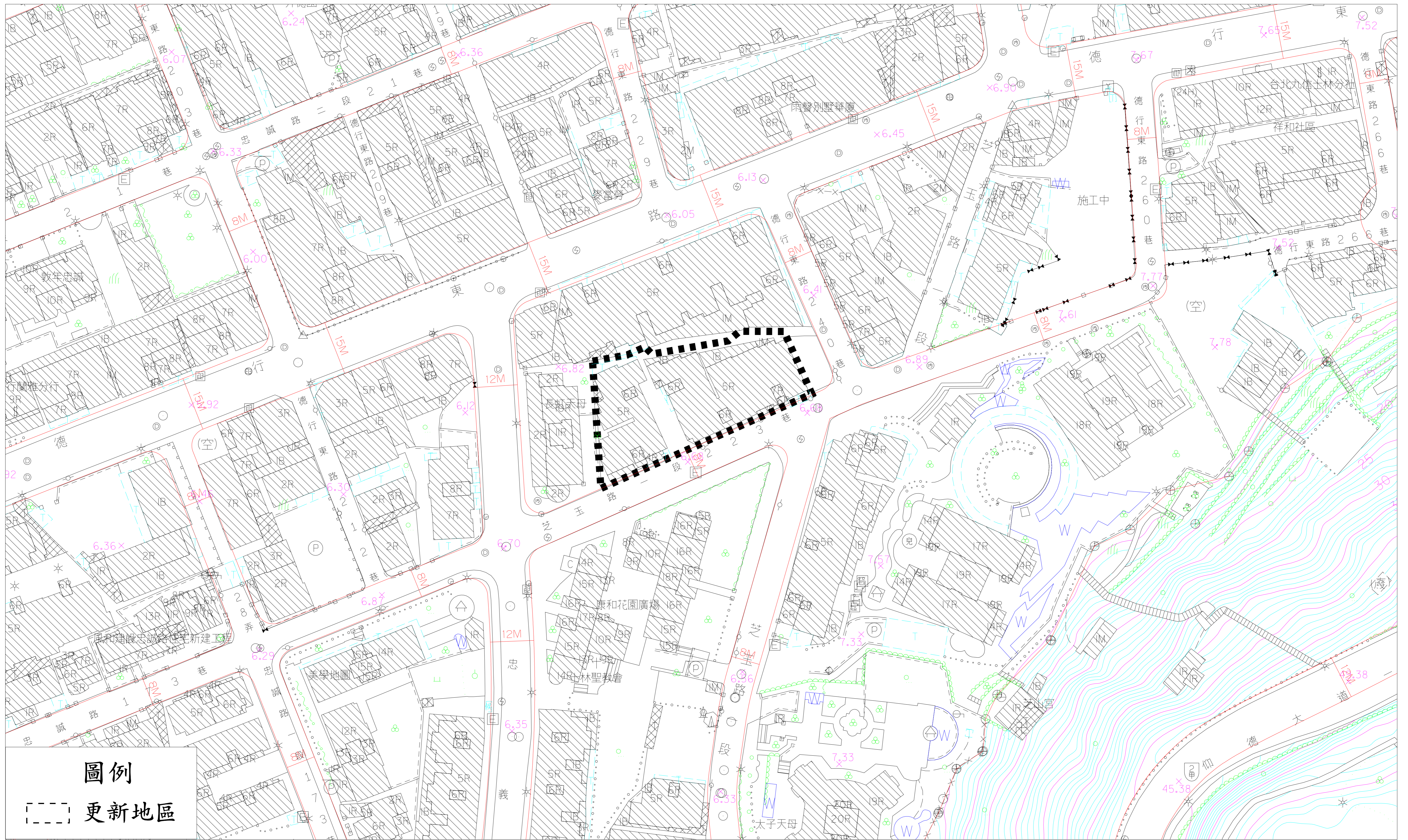
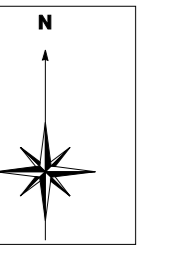
比例尺

SCALE



公尺

# 士林區-士林-7-臺北市士林區芝山段一小段13-1地號更新地區



圖例

更新地區

比例尺  
SCALE

